

For additional installation reference, please refer to our technical installation video located at evolvehairsolutions.com/evolveextensions.

1. Begin with clean, dry, flat ironed hair.



2. Take a clean horizontal or diagonal parting as needed for the specific plane of the head where you are installing.

Use Three Velcro strips

3. Place the first Velcro strip on the top section to secure the clients hair in place.



4. Place the second Velcro strip on the bottom section approximately 1/2" from the part line.



5. Place the easy loop directly on the top of the second Velcro strip, edge to edge.

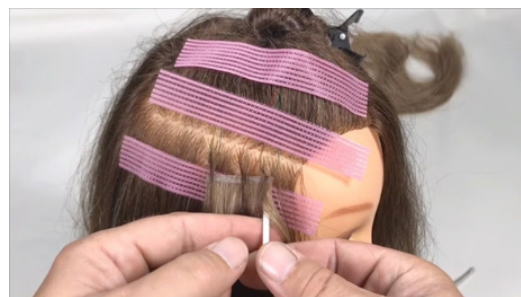
6. Place the third Velcro strip directly over the top of the polymer loops



7. Using the Integration Tool retrieve equal amounts of the client's hair through each loop.
8. Whenever possible begin with the center polymer loop and progress to the outside loops. This will aid in stabilizing the connecting base during installation.



9. Pull the polymer loop through the extension connection base
10. Hold the Connection Point with the thumb and index finger of one hand while pulling down on the polymer loop with the other.



11. This will feed the client's hair directly through the Connection Point.
12. Keep the connecting base steady and in place. The only hair you should feel feeding through the Connection Point is the client's own hair.



16. Using the Integration Tool, gather a small amount of the client's non-secured hair over the top of the connecting base. This will help to create a more natural effect and camouflage the remaining connecting base.



13. Once the Connection Point is in place, use the Transformer to clamp the Connection Point into place.
14. **NOTE:** NEVER install Connection Points overly tight. Keep approximately a **1/16"** gap between the Connection Point and the connecting base.



15. Once all Connection Points are secure, flip the connecting base up to confirm proper installation.

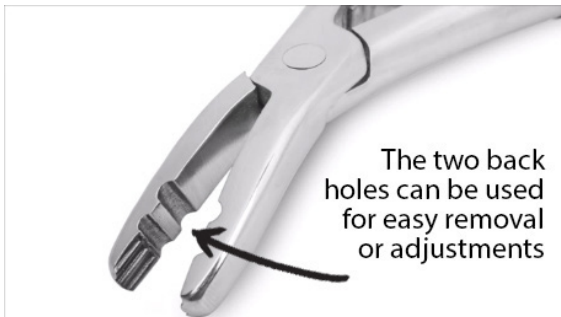
Tips for success:

1. Make sure that you grab enough hair for the connection point to adhere to.
2. Make sure that you're always keeping your Transformation Tool and wrist parallel to the part.
3. Make sure that you close the transformation tool tightly which should create a straight crease across the connection point. If the crease is diagonal, the extension may flip or loosen with brushing.

1. Gently flip the connecting base up to view the Connection Points.



2. Using either of the two holes at the rear of the Transformer LW, place the Connection Point to be adjusted or removed horizontally in the hole and squeeze gently. This will open the Connection Point for adjustment or removal.



3. To adjust a Connection Point once opened, simply slide the Connection Point to the desired position using the end of the Transformer and re-secure.

(Should you have problems opening the Connection Point with your Transformer LW, use the Reformer for additional help with removal.)

NOTE: Once a Connection Point has been totally removed from service, it is no longer reusable.

Reload Loops



Save your easy loops, as they're reusable.

1. Slide the Connection Point of your choice down onto the nylon loop (green or red) located on the top of the polymer tube. Connection Points will slide down easily as the flexible, yet firm, design of the nylon loop will give way easily to the gentle sliding down of the Connection Point. Never force the Connection Point down or pull excessively on the nylon loop, as it's not necessary. Once in place, the polymer loop will expand back and hold your Connection Point in place.
2. Next insert the narrow end of the polymer loop through the ports of the connecting base where you wish to secure your extension. Pull gently until the Connection Point sits snugly against the connecting base.
3. Once fully loaded you are now ready for your next installation.

Evolve Extensions+ Easy Loops are easier, faster, cheaper than reloading tapes or removing adhesive out of the hair.

END SEGMENT 3